



WHEN YOUR FOREMAN SAYS TO GET YOUR YOU-KNOW-WHAT TOGETHER, THIS IS WHAT HE MEANS.

Because stationary or mobile, gigantic or small, Proto® tool boxes aren't just metal bins. They're icons of organization and efficiency. We're talking full extension drawers, sectionalized compartments and dozens of configurations. They're also built like a sledge with thick gauge steel housings, heavy steel drawer fronts, ball bearing slides and electrocoat finishes. Mobile units get beefed up further with diagonal reinforcing bars and shock absorbing wheels. It's everything you need to get squared away and stay that way, for a good, long time.

TOOL STORAGE



Heavy-Duty Utility Cart

PROTO



TOOL STORAGE ORGANIZED AROUND YOU

Proto® offers three series of tool storage solutions, from the versatile 440 series to the super-heavy-duty 460 series. All are built to exacting standards, include drawer liners, and have premium features like full-extension drawers, recessed drawer pulls, available built-in drawer compartments and durable finishes.

450 SERIES COLOR OPTIONS

Custom Colors Available by Request



440 SERIES

Available in Red and Black



TOOL BOX PRODUCT NUMBER IDENTIFICATION

Proto's item numbering system for tool boxes is designed to make it easy for users to identify the box that has the size and drawer configuration that best meets their needs.

EXAMPLE: J442742-4RD-D

Part Number Key

■ Series of Tool Box ■ Width and Height (inches) ■ # of Drawers ■ Cabinet Color ■ Special Feature

Special Feature Code

D = Drop Front IC = Intermediate Chest SC = Side Cabinet LK = Locker 1S = 1 Shelf 2S = 2 Shelf

460 SERIES — PREMIUM, HEAVY-DUTY STORAGE



All 460 series cabinets feature wood top work surfaces



Lock-in, lock-out drawers for security and safety

Drawer dividers make each drawer custom configurable



6" casters — 2 swivel, 2 rigid — load-rated to carry 800 lbs. per caster



Drawer capacity slides rated to 400 lbs.



450 SERIES — PREMIUM, INDUSTRIAL-DUTY STORAGE

Drawers extend fully and still carry 200 lbs



Dual ball bearing slides on deep drawers for added strength



6"x 2" Phenolic casters are load-rated to carry 700 lbs. per caster

460 45" WORKSTATION - 10 DRAWER



Product #	Color	Length In.	Height In.	Depth In.	Weight Lbs.
J464542-10RD	Red	45	42-1/2	21-3/8	400



Quantity	Type	Length In.	Height In.	Depth In.
1	Drawer	42-1/2	4-5/8	19-7/8
2	Drawer	20-1/4	3	19-7/8
1	Drawer	20-1/4	7	19-7/8
1	Drawer	20-1/4	12-1/2	19-7/8
1	Drawer	20-1/4	3-7/8	19-7/8
3	Drawer	20-1/4	4-5/8	19-7/8
1	Drawer	20-1/4	7-7/8	19-7/8

- › Premium tool storage line.
- › Cubic inch capacity is 24,457.
- › 22" depth footprint for high mobility.
- › All steel construction.
- › Heavy drawer capacity slides rated at 400 lbs.
- › Lock in / lock out drawers for security and safety.
- › Heavy load bearing casters – 800 lbs.
- › Built in compartments for customizable storage needs.
- › Heavy-duty 6" casters (2 swivel and 2 rigid).
- › Red powder coated finish.
- › Heavy-duty tubular lock system.
- › Vinyl top and drawer liners included.

460 45" WORKSTATION - 6 DRAWER



Product #	Color	Length In.	Height In.	Depth In.	Weight Lbs.
J464542-6RD-1S	Red	45	42-1/2	21-3/8	390



Qty.	Type	Length In.	Height In.	Depth In.
1	Drawer	42-1/2	4-5/8	19-7/8
1	Drawer	20-1/4	3-7/8	19-7/8
3	Drawer	20-1/4	4-5/8	19-7/8
1	Drawer	20-1/4	7-7/8	19-7/8
1	Compartment	20-1/4	21-1/2	19-7/8

- › Premium tool storage line.
- › Cubic inch capacity is 24,498.
- › 22" depth footprint for high mobility.
- › All steel construction.
- › Heavy drawer capacity slides rated at 400 lbs.
- › Lock in / lock out drawers for security and safety.
- › Heavy load bearing casters – 800 lbs.
- › Built in compartments for customizable storage needs.
- › Heavy-duty 6" casters (2 swivel and 2 rigid).
- › Red powder coated finish.
- › Heavy-duty tubular lock system.
- › Vinyl top and drawer liners included.



460 30" ROLLER CABINET - 6 DRAWER



Product #	Color	Length In.	Height In.	Depth In.	Weight Lbs.
J463042-6RD	Red	30	42-1/2	21-3/8	354



Qty.	Type	Length In.	Height In.	Depth In.
1	Drawer	42-1/2	3	19-7/8
2	Drawer	20-1/4	3-7/8	19-7/8
1	Drawer	20-1/4	4-5/8	19-7/8
1	Drawer	20-1/4	6-1/4	19-7/8
1	Drawer	20-1/4	9-3/8	19-7/8

- › Premium tool storage line.
- › Cubic inch capacity is 15,965.
- › 22" depth footprint for high mobility.
- › All steel construction.
- › Heavy drawer capacity slides rated at 400 lbs.
- › Lock in / lock out drawers for security and safety.
- › Heavy load bearing casters – 800 lbs.
- › Built in compartments for customizable storage needs.
- › Heavy-duty 6" casters (2 swivel and 2 rigid).
- › Red powder coated finish.
- › Heavy-duty tubular lock system.
- › Vinyl top and drawer liners included.



THE STORY BEHIND THE 460 SERIES WORKSTATIONS

The 460 Series workstations are not so much a tool box as they are a mobile version of industrial storage. Everything from the drawers to the chests to the cabinets has been beefed up to handle bigger and heavier loads.

Designed by our engineers who specialize in permanent storage cabinets, the 460 workstation combines the strength and capacity of built-in storage with the flexibility and speed of a mobile unit.

LOCK-IN / LOCK-OUT DRAWERS

Drawers have a lift lever that not only makes tray movement easier when fully loaded; but the drawers also have a lock/lift that set the drawer down into a locked position each time it closes. That way, when you roll the cabinet, the drawers stay shut.

HEAVIER LOAD CAPACITY

You can safely move larger tool loads around the workshop when the drawers hold 400 lbs. of weight instead of 200 lbs.

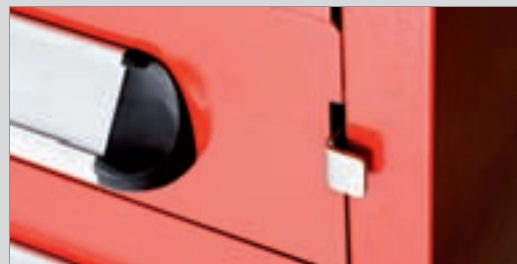
Casters are also stronger - they can hold 800 lbs. of weight.

BETTER TOOL ORGANIZATION

Each drawer is built with customized storage dividers already included. This feature keeps tools neat and organized, as well as preventing items from rolling and mixing as the workstation is moved.



Many kinds of storage dividers to organize tools.



Lock and Lift Drawer System secures heavy loads tightly, but keep drawer movement smooth and easy.

450HS 67" WORKSTATION - 20 DRAWER



Product #	Color	Length In.	Height In.	Depth In.	Weight Lbs.
J456741-20RD	Red	66-7/8	41	25-1/4	600



Sizes	Qty.	Length In.	Height In.	Depth In.
X-WIDE	1	44-7/16	4-1/2	23
WIDE	2	28	2-1/4	23
	2	28	3-3/8	23
	1	28	4-1/2	23
	1	28	6-7/8	23
NARROW	5	13-7/16	2-1/4	23
	4	13-7/16	3-3/8	23
	3	13-7/16	4-1/2	23
	1	13-7/16	11-1/2	23

- › Storage capacity 30,519 cubic inches.
- › Large top drawer for socket storage.
- › Tubular lock for added security.
- › Full length aluminum drawer pulls.
- › 6"x2" Heavy-Duty casters with 1200-lbs. capacity per wheel.
- › Ball bearing track slides.
 - 125-lbs. capacity (250-lbs. for drawers with 2 sets of slides)
 - Adjustable detents 12 to 24-lbs. pull force
- › Interchangeable drawers can be moved to meet customer's needs.
- › Vinyl top and drawer liners included.

450HS 66" WORKSTATION - 12 DRAWER



Product #	Color	Length In.	Height In.	Depth In.	Weight Lbs.
J456646-12RD	Red	66-1/2	46	27	750
J456646-12BK	Black	66-1/2	46	27	750
J456646-12BL	Blue	66-1/2	46	27	750
J456646-12YL	Yellow	66-1/2	46	27	750



Quantity	Type	Length In.	Height In.	Depth In.
1	Drawer	59	6	24-3/4
2	Drawer	37-3/8	1-3/4	24-3/4
2	Drawer	37-3/8	3	24-3/4
1	Drawer	37-3/8	4	24-3/4
1	Drawer	37-3/8	6	24-3/4
2	Drawer	18-2/3	1-3/4	24-3/4
2	Drawer	18-2/3	3	24-3/4
1	Drawer	18-2/3	11	24-3/4

- › Cubic inch capacity is 36,455.
- › Made of 14, 16 and 18 gauge steel.
- › Maximum weight capacity for each drawer is 200 lbs.
- › Standard red powder coat paint finish. Also available in black, blue and yellow, made to order. Contact customer service for availability.
- › Heavy-duty locks with tubular key.
- › Recessed aluminum extruded drawer pulls.
- › 100% full extension drawers.
- › Vinyl top and drawer liners included.
- › 6" x 2" Poly casters - 700 lbs./caster.



450HS 66" WORKSTATION - 11 DRAWER



Product #	Color	Length In.	Height In.	Depth In.	Weight Lbs.
J456646-11RD	Red	66-1/2	46	27	750
J456646-11BK	Black	66-1/2	46	27	750
J456646-11BL	Blue	66-1/2	46	27	750
J456646-11YL	Yellow	66-1/2	46	27	750



Quantity	Type	Length In.	Height In.	Depth In.
1	Drawer	59	6	24-3/4
2	Drawer	37-3/8	3	24-3/4
2	Drawer	37-3/8	4	24-3/4
1	Drawer	37-3/8	6	24-3/4
2	Drawer	18-2/3	1-3/4	24-3/4
2	Drawer	18-2/3	3	24-3/4
1	Drawer	18-2/3	18	24-3/4

- › Cubic inch capacity is 35,917.
- › Made of 14, 16 and 18 gauge steel.
- › Maximum weight capacity for each drawer is 200 lbs.
- › Standard red powder coat paint finish. Also available in black, blue and yellow, made to order. Contact customer service for availability.
- › Heavy-duty locks with tubular key.
- › Recessed aluminum extruded drawer pulls.
- › 100% full extension drawers.
- › Vinyl top and drawer liners included.
- › 6" x 2" Poly casters - 700 lbs./caster.

450HS 57" WORKSTATION - 13 DRAWER



Product #	Color	Length In.	Height In.	Depth In.	Weight lbs.
J455743-13RD	Red	57	43	25	625
J455743-13BK	Black	57	43	25	625
J455743-13BL	Blue	57	43	25	625
J455743-13YL	Yellow	57	43	25	625



Quantity	Type	Length In.	Height In.	Depth In.
3	Drawer	28	1-3/4	23
2	Drawer	28	3	23
1	Drawer	28	4	23
1	Drawer	28	6-3/8	23
2	Drawer	18-2/3	1-3/4	23
2	Drawer	18-2/3	4	23
1	Drawer	18-2/3	11	23
1	Drawer	49-2/3	3-7/8	23

- › Cubic inch capacity is 28,291.
- › Made of 14, 16 and 18 gauge steel.
- › Maximum weight capacity for each drawer is 200 lbs.
- › Standard red powder coat paint finish. Also available in black, blue and yellow, made to order. Contact customer service for availability.
- › Heavy-duty locks with tubular key.
- › Recessed aluminum extruded drawer pulls.
- › 100% full extension drawers.
- › Vinyl top and drawer liners included.
- › 6" x 2" Poly casters - 700 lbs./caster.

450HS 57" WORKSTATION - 11 DRAWER



Product #	Color	Length In.	Height In.	Depth In.	Weight Lbs.
J455743-11RD	Red	57	43	25	625
J455743-11BK	Black	57	43	25	625
J455743-11BL	Blue	57	43	25	625
J455743-11YL	Yellow	57	43	25	625



Quantity	Type	Length In.	Height In.	Depth In.
1	Drawer	28	4	23
3	Drawer	28	6-3/8	23
1	Drawer	18-2/3	1-3/4	23
5	Drawer	18-2/3	4	23
1	Drawer	49-2/3	3-7/8	23

- › Cubic inch capacity is 26,541.
- › Made of 14, 16 and 18 gauge steel.
- › Maximum weight capacity for each drawer is 200 lbs.
- › Standard red powder coat paint finish. Also available in black, blue and yellow, made to order. Contact customer service for availability.
- › Heavy-duty locks with tubular key.
- › Recessed aluminum extruded drawer pulls.
- › 100% full extension drawers.
- › Vinyl top and drawer liners included.
- › 6" x 2" Poly casters - 700 lbs./caster.

450HS 50" WORKSTATION - 8 DRAWER - 2 SHELVES



Product #	Color	Length In.	Height In.	Depth In.	Weight Lbs.
J455041-8RD-2S	Red	50-1/2	41	25	475
J455041-8BK-2S	Black	50-1/2	41	25	475
J455041-8BL-2S	Blue	50-1/2	41	25	475
J455041-8YL-2S	Yellow	50-1/2	41	25	475



Quantity	Type	Length In.	Height In.	Depth In.
4	Drawer	28	1-3/4	23
3	Drawer	28	4	23
1	Drawer	44-7/16	4	23
2	Bin	13-7/16	18	23

- › Cubic inch capacity is 18,920.
- › Made of 14, 16 and 18 gauge steel.
- › Maximum weight capacity for each drawer is 125 lbs.
- › Standard red powder coat paint finish. Also available in black, blue and yellow, made to order. Contact customer service for availability.
- › Heavy-duty locks with tubular key.
- › Recessed aluminum extruded drawer pulls.
- › 100% full extension drawers.
- › Vinyl top and drawer liners included.
- › 6" x 2" Poly casters - 700 lbs./caster.



450HS 50" WORKSTATION - 8 DRAWER - 1 SHELF



Product #	Color	Length In.	Height In.	Depth In.	Weight Lbs.
J455041-8RD-1S	Red	50-1/2	41	25	475
J455041-8BK-1S	Black	50-1/2	41	25	475
J455041-8BL-1S	Blue	50-1/2	41	25	475
J455041-8YL-1S	Yellow	50-1/2	41	25	475



Quantity	Type	Length In.	Height In.	Depth In.
4	Drawer	28	1-3/4	23
3	Drawer	28	4	23
1	Drawer	44-7/16	4	23
1	Bin	13-7/16	18	23

- › Cubic inch capacity is 20,092.
- › Made of 14, 16 and 18 gauge steel.
- › Maximum weight capacity for each drawer is 125 lbs.
- › Standard red powder coat paint finish. Also available in black, blue and yellow, made to order. Contact customer service for availability.
- › Heavy-duty locks with tubular key.
- › Recessed aluminum extruded drawer pulls.
- › 100% full extension drawers.
- › Vinyl top and drawer liners included.
- › 6" x 2" Poly casters - 700 lbs./caster.

450HS 50" WORKSTATION - 7 DRAWER - 1 SHELF



Product #	Color	Length In.	Height In.	Depth In.	Weight Lbs.
J455041-7RD-1S	Red	50-1/2	41	25	475
J455041-7BK-1S	Black	50-1/2	41	25	475
J455041-7BL-1S	Blue	50-1/2	41	25	475
J455041-7YL-1S	Yellow	50-1/2	41	25	475



Quantity	Type	Length In.	Height In.	Depth In.
1	Drawer	28	1-3/4	23
2	Drawer	28	3	23
3	Drawer	28	4	23
1	Drawer	44-7/16	4	23
1	Bin	13-7/16	18	23

- › Cubic inch capacity is 18,109.
- › Made of 14, 16 and 18 gauge steel.
- › Maximum weight capacity for each drawer is 125 lbs.
- › Standard red powder coat paint finish. Also available in black, blue and yellow, made to order. Contact customer service for availability.
- › Heavy-duty locks with tubular key.
- › Recessed aluminum extruded drawer pulls.
- › 100% full extension drawers.
- › Vinyl top and drawer liners included.
- › 6" x 2" Poly casters - 700 lbs./caster.



450HS 50" WORKSTATION - 12 DRAWER



Product #	Color	Length In.	Height In.	Depth In.	Weight lbs.
J455041-12RD	Red	50-1/2	41	25	475
J455041-12BK	Black	50-1/2	41	25	475
J455041-12BL	Blue	50-1/2	41	25	475
J455041-12YL	Yellow	50-1/2	41	25	475



Quantity	Type	Length In.	Height In.	Depth In.
1	Drawer	28	1-3/4	23
3	Drawer	28	4	23
1	Drawer	28	6-7/16	23
1	Drawer	13-7/16	1-3/4	23
2	Drawer	13-7/16	3	23
3	Drawer	13-7/16	4	23
1	Drawer	44-7/16	4	23

- › Cubic inch capacity is 23,419.
- › Made of 14, 16 and 18 gauge steel.
- › Maximum weight capacity for each drawer is 125 lbs.
- › Standard red powder coat paint finish. Also available in black, blue and yellow, made to order. Contact customer service for availability.
- › Heavy-duty locks with tubular key.
- › Recessed aluminum extruded drawer pulls.
- › 100% full extension drawers.
- › Vinyl top and drawer liners included.
- › 6" x 2" Poly casters - 700 lbs./caster.

450HS 50" WORKSTATION - 10 DRAWER



Product #	Color	Length In.	Height In.	Depth In.	Weight lbs.
J455041-10RD	Red	50-1/2	41	25	475
J455041-10BK	Black	50-1/2	41	25	475
J455041-10BL	Blue	50-1/2	41	25	475
J455041-10YL	Yellow	50-1/2	41	25	475



Quantity	Type	Length In.	Height In.	Depth In.
1	Drawer	28	1-3/4	23
3	Drawer	28	4	23
1	Drawer	28	6-7/16	23
1	Drawer	13-7/16	1-3/4	23
2	Drawer	13-7/16	4	23
1	Drawer	13-7/16	11	23
1	Drawer	44-7/16	4	23

- › Cubic inch capacity is 23,779.
- › Made of 14, 16 and 18 gauge steel.
- › Maximum weight capacity for each drawer is 125 lbs.
- › Standard red powder coat paint finish. Also available in black, blue and yellow, made to order. Contact customer service for availability.
- › Heavy-duty locks with tubular key.
- › Recessed aluminum extruded drawer pulls.
- › 100% full extension drawers.
- › Vinyl top and drawer liners included.
- › 6" x 2" Poly casters - 700 lbs./caster.



450HS 34" ROLLER CABINET - 8 DRAWER



Product #	Color	Length In.	Height In.	Depth In.	Weight Lbs.
J453441-8RD	Red	34	41	25	310
J453441-8BK	Black	34	41	25	310
J453441-8BL	Blue	34	41	25	310
J453441-8YL	Yellow	34	41	25	310



Quantity	Type	Length In.	Height In.	Depth In.
4	Drawer	28	1-3/4	23
1	Drawer	28	4	23
2	Drawer	28	3	23
1	Drawer	28	6-1/2	23

- › Cubic inch capacity is 15,134.
- › Made of 14, 16 and 18 gauge steel.
- › Maximum weight capacity for each drawer is 125 lbs.
- › Standard red powder coat paint finish. Also available in black, blue and yellow, made to order. Contact customer service for availability.
- › Heavy-duty locks with tubular key.
- › Recessed aluminum extruded drawer pulls.
- › 100% full extension drawers.
- › Vinyl top and drawer liners included.
- › 6" x 2" Poly casters - 700 lbs./caster.

450HS 34" ROLLER CABINET - 7 DRAWER



Product #	Color	Length In.	Height In.	Depth In.	Weight Lbs.
J453441-7RD	Red	34	41	25	310
J453441-7BK	Black	34	41	25	310
J453441-7BL	Blue	34	41	25	310
J453441-7YL	Yellow	34	41	25	310



Quantity	Type	Length In.	Height In.	Depth In.
3	Drawer	28	1-3/4	23
2	Drawer	28	4	23
2	Drawer	28	6-1/2	23

- › Cubic inch capacity is 15,390.
- › Made of 14, 16 and 18 gauge steel.
- › Maximum weight capacity for each drawer is 125 lbs.
- › Standard red powder coat paint finish. Also available in black, blue and yellow, made to order. Contact customer service for availability.
- › Heavy-duty locks with tubular key.
- › Recessed aluminum extruded drawer pulls.
- › 100% full extension drawers.
- › Vinyl top and drawer liners included.
- › 6" x 2" Poly casters - 700 lbs./caster.



450HS 34" ROLLER CABINET - 6 DRAWER



Product #	Color	Length In.	Height In.	Depth In.	Weight Lbs.
J453441-6RD	Red	34	41	25	310
J453441-6BK	Black	34	41	25	310
J453441-6BL	Blue	34	41	25	310
J453441-6YL	Yellow	34	41	25	310



Quantity	Type	Length In.	Height In.	Depth In.
2	Drawer	28	1-3/4	23
2	Drawer	28	4	23
2	Drawer	28	6-1/2	23

- › Cubic inch capacity is 15,765.
- › Made of 14, 16 and 18 gauge steel.
- › Maximum weight capacity for each drawer is 125 lbs.
- › Standard red powder coat paint finish. Also available in black, blue and yellow, made to order. Contact customer service for availability.
- › Heavy-duty locks with tubular key.
- › Recessed aluminum extruded drawer pulls.
- › 100% full extension drawers.
- › Vinyl top and drawer liners included.
- › 6" x 2" Poly casters - 700 lbs./caster.

HEAVY-DUTY UTILITY CARTS



Product #	Color	Length In.	Height In.	Depth In.	Weight Lbs.
J459000-3RD	Red	39-1/2	46	23	350
J459000-3BK	Black	39-1/2	46	23	350
J459000-3BL	Blue	39-1/2	46	23	350
J459000-3YL	Yellow	39-1/2	46	23	350



Quantity	Type	Length In.	Height In.	Depth In.
2	Drawer	28-5/8	2-7/8	18-3/8
1	Drawer	28-5/8	5-7/16	18-3/8
1	Compartment	31-1/4	5-7/16	17-1/2

- › Proto® Utility Carts have been developed to meet the increasing requirements that customers demand.
- › Cubic inch capacity is 25,450.
- › 36-1/2" x 21-1/2" top work surface with vinyl mat.
- › Oil filled shock lift top.
- › Single barrel lock.
- › Retractable lift lid opens to a 5" storage compartment with side and back storage for long handled items.
- › Three drawers for storage.
Two: 2-3/4" drawers. One: 6" drawer.
- 100 lbs. ball bearing slides.
- Dual ball bearing slides on 6" drawer only.
- › Open storage area.
- › Outside and inside extension / pry bar storage area.
- › 5" x 2" Casters. 2 rigid, 2 swivel.
- › Vinyl top and drawer liners included.

450HS 66" TOP CHEST - 10 DRAWER



Product #	Color	Length In.	Height In.	Depth In.	Weight lbs.
J456627-10RD	Red	66	27-1/4	27	550
J456627-10BK	Black	66	27-1/4	27	550
J456627-10BL	Blue	66	27-1/4	27	550
J456627-10YL	Yellow	66	27-1/4	27	550



Quantity	Type	Length In.	Height In.	Depth In.
3	Drawer	37-3/8	2-1/4	24-3/4
2	Drawer	37-3/8	3-3/8	24-3/4
3	Drawer	18-5/8	2-1/4	24-3/4
2	Drawer	18-5/8	3-3/8	24-3/4
1	Compartment	58	6-7/16	24-3/4

- › Cubic inch capacity is 26,684.
- › Made of 14, 16 and 18 gauge steel.
- › Maximum weight capacity for each drawer is 200 lbs.
- › Standard red powder coat paint finish. Also available in black, blue and yellow, made to order. Contact customer service for availability.
- › Heavy-duty locks with tubular key.
- › Recessed aluminum extruded drawer pulls.
- › 100% full extension drawers.
- › Vinyl top and drawer liners included.

450HS 66" TOP CHEST - 8 DRAWER



Product #	Color	Length In.	Height In.	Depth In.	Weight lbs.
J456627-8RD	Red	66	27-1/4	27	550
J456627-8BK	Black	66	27-1/4	27	550
J456627-8BL	Blue	66	27-1/4	27	550
J456627-8YL	Yellow	66	27-1/4	27	550



Quantity	Type	Length In.	Height In.	Depth In.
1	Drawer	37-3/8	2-1/4	24-3/4
2	Drawer	37-3/8	3-3/8	24-3/4
1	Drawer	37-3/8	2-1/4	24-3/4
4	Drawer	18-5/8	3-3/8	24-3/4
1	Compartment	58	6-7/16	24-3/4

- › Cubic inch capacity is 25,494.
- › Made of 14, 16 and 18 gauge steel.
- › Maximum weight capacity for each drawer is 200 lbs.
- › Standard red powder coat paint finish. Also available in black, blue and yellow, made to order. Contact customer service for availability.
- › Heavy-duty locks with tubular key.
- › Recessed aluminum extruded drawer pulls.
- › 100% full extension drawers.
- › Vinyl top and drawer liners included.



450HS 50" TOP CHEST - 12 DRAWER



Product #	Color	Length In.	Height In.	Depth In.	Weight Lbs.
J455027-12RD	Red	50-1/2	27	25	370
J455027-12BK	Black	50-1/2	27	25	370
J455027-12BL	Blue	50-1/2	27	25	370
J455027-12YL	Yellow	50-1/2	27	25	370



Quantity	Type	Length In.	Height In.	Depth In.
4	Drawer	28	1-3/4	23
2	Drawer	28	3	23
4	Drawer	13-7/16	1-3/4	23
2	Drawer	13-7/16	3	23
1	Compartment	44-1/4	5-1/4	23-1/4

- › Cubic inch capacity is 17,641.
- › Made of 14, 16 and 18 gauge steel.
- › Maximum weight capacity for each drawer is 125 lbs.
- › Standard red powder coat paint finish. Also available in black, blue and yellow, made to order. Contact customer service for availability.
- › Heavy-duty locks with tubular key.
- › Recessed aluminum extruded drawer pulls.
- › 100% full extension drawers.
- › Vinyl top and drawer liners included.

450HS 50" TOP CHEST - 10 DRAWER



Product #	Color	Length In.	Height In.	Depth In.	Weight lbs.
J455027-10RD	Red	50-1/2	27	25	370
J455027-10BK	Black	50-1/2	27	25	370
J455027-10BL	Blue	50-1/2	27	25	370
J455027-10YL	Yellow	50-1/2	27	25	370



Quantity	Type	Length In.	Height In.	Depth In.
2	Drawer	28	1-3/4	23
2	Drawer	28	3	23
1	Drawer	28	4	23
2	Drawer	13-7/16	1-3/4	23
2	Drawer	13-7/16	3	23
1	Drawer	28	4	23
1	Compartment	44-1/4	5-1/4	23-1/4

- › Cubic inch capacity is 18,197.
- › Made of 14, 16 and 18 gauge steel.
- › Maximum weight capacity for each drawer is 125 lbs.
- › Standard red powder coat paint finish. Also available in black, blue and yellow, made to order. Contact customer service for availability.
- › Heavy-duty locks with tubular key.
- › Recessed aluminum extruded drawer pulls.
- › 100% full extension drawers.
- › Vinyl top and drawer liners included.

450HS 50" TOP CHEST - 8 DRAWER



Product #	Color	Length In.	Height In.	Depth In.	Weight lbs.
J455027-8RD	Red	50-1/2	27	25	370
J455027-8BK	Black	50-1/2	27	25	370
J455027-8BL	Blue	50-1/2	27	25	370
J455027-8YL	Yellow	50-1/2	27	25	370



Quantity	Type	Length In.	Height In.	Depth In.
2	Drawer	28	3	23
2	Drawer	28	4	23
2	Drawer	13-7/16	3	23
2	Drawer	13-7/16	4	23
1	Compartment	44-1/4	5-1/4	23-1/4

- › Cubic inch capacity is 18,753.
- › Made of 14, 16 and 18 gauge steel.
- › Maximum weight capacity for each drawer is 125 lbs.
- › Standard red powder coat paint finish. Also available in black, blue and yellow, made to order. Contact customer service for availability.
- › Heavy-duty locks with tubular key.
- › Recessed aluminum extruded drawer pulls.
- › 100% full extension drawers.
- › Vinyl top and drawer liners included.

450HS 34" TOP CHEST - 6 DRAWER



Product #	Color	Length In.	Height In.	Depth In.	Weight Lbs.
J453427-6RD	Red	34	27	25	235
J453427-6BK	Black	34	27	25	235
J453427-6BL	Blue	34	27	25	235
J453427-6YL	Yellow	34	27	25	235



Quantity	Type	Length In.	Height In.	Depth In.
4	Drawer	28	1-3/4	23
2	Drawer	28	3	23
1	Compartment	27-3/4	5-1/4	23-1/4

- › Cubic inch capacity is 11,662.
- › Made of 14, 16 and 18 gauge steel.
- › Maximum weight capacity for each drawer is 125 lbs.
- › Standard red powder coat paint finish. Also available in black, blue and yellow, made to order. Contact customer service for availability.
- › Heavy-duty locks with tubular key.
- › Recessed aluminum extruded drawer pulls.
- › 100% full extension drawers.
- › Vinyl top and drawer liners included.



450HS 34" TOP CHEST - 5 DRAWER



Product #	Color	Length In.	Height In.	Depth In.	Weight Lbs.
J453427-5RD	Red	34	27	25	235
J453427-5BK	Black	34	27	25	235
J453427-5BL	Blue	34	27	25	235
J453427-5YL	Yellow	34	27	25	235



Quantity	Type	Length In.	Height In.	Depth In.
3	Drawer	28	1-3/4	23
2	Drawer	28	4	23
1	Compartment	27-3/4	5-1/4	23-1/4

- › Cubic inch capacity is 12,037.
- › Made of 14, 16 and 18 gauge steel.
- › Maximum weight capacity for each drawer is 125 lbs.
- › Standard red powder coat paint finish. Also available in black, blue and yellow, made to order. Contact customer service for availability.
- › Heavy-duty locks with tubular key.
- › Recessed aluminum extruded drawer pulls.
- › 100% full extension drawers.
- › Vinyl top and drawer liners included.

450HS 34" TOP CHEST - 4 DRAWER



Product #	Color	Length In.	Height In.	Depth In.	Weight Lbs.
J453427-4RD	Red	34	27	25	235
J453427-4BK	Black	34	27	25	235
J453427-4BL	Blue	34	27	25	235
J453427-4YL	Yellow	34	27	25	235



Quantity	Type	Length In.	Height In.	Depth In.
2	Drawer	28	3	23
2	Drawer	28	4	23
1	Compartment	27-3/4	5-1/4	23-1/4

- › Cubic inch capacity is 12,414.
- › Made of 14, 16 and 18 gauge steel.
- › Maximum weight capacity for each drawer is 125 lbs.
- › Standard red powder coat paint finish. Also available in black, blue and yellow, made to order. Contact customer service for availability.
- › Heavy-duty locks with tubular key.
- › Recessed aluminum extruded drawer pulls.
- › 100% full extension drawers.
- › Vinyl top and drawer liners included.

450HS SIDE CABINET - 6 DRAWER



Product #	Color	Length In.	Height In.	Depth In.	Weight Lbs.
J451934-6RD-SC	Red	19-1/2	34	25	175
J451934-6BK-SC	Black	19-1/2	34	25	175
J451934-6BL-SC	Blue	19-1/2	34	25	175
J451934-6YL-SC	Yellow	19-1/2	34	25	175



Quantity	Type	Length In.	Height In.	Depth In.
3	Drawer	13-7/16	1-3/4	23
2	Drawer	13-7/16	4	23
1	Drawer	13-7/16	11	23

- › Cubic inch capacity is 7,554.
- › Made of 14, 16 and 18 gauge steel.
- › Maximum weight capacity for each drawer is 125 lbs.
- › Standard red powder coat paint finish. Also available in black, blue and yellow, made to order. Contact customer service for availability.
- › Heavy-duty locks with tubular key.
- › Recessed aluminum extruded drawer pulls.
- › 100% full extension drawers.
- › Vinyl top and drawer liners included.



450HS SIDE CABINET - 5 DRAWER



Product #	Color	Length In.	Height In.	Depth In.	Weight lbs.
J451934-5RD-SC	Red	19-1/2	34	25	175
J451934-5BK-SC	Black	19-1/2	34	25	175
J451934-5BL-SC	Blue	19-1/2	34	25	175
J451934-5YL-SC	Yellow	19-1/2	34	25	175

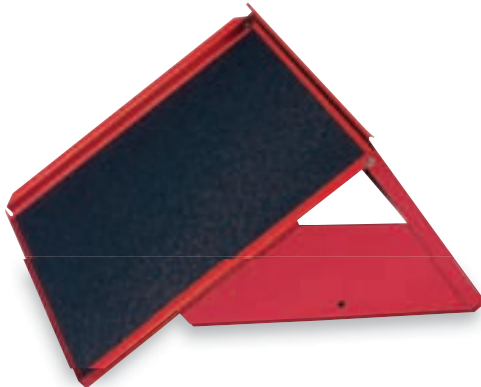


Quantity	Type	Length In.	Height In.	Depth In.
1	Drawer	13-7/16	1-3/4	23
3	Drawer	13-7/16	4	23
1	Drawer	13-7/16	11	23

- › Cubic inch capacity is 7,734.
- › Made of 14, 16 and 18 gauge steel.
- › Maximum weight capacity for each drawer is 125 lbs.
- › Standard red powder coat paint finish. Also available in black, blue and yellow, made to order. Contact customer service for availability.
- › Heavy-duty locks with tubular key.
- › Recessed aluminum extruded drawer pulls.
- › 100% full extension drawers.
- › Vinyl top and drawer liners included.

450HS SIDE SHELVES

Product #	Color	Size In.	Weight Lbs.
J45SS-RD	Red	25 x 14-1/2	11.5
J45SS-BK	Black	25 x 14-1/2	11.5
J45SS-BL	Blue	25 x 14-1/2	11.5
J45SS-YL	Yellow	25 x 14-1/2	11.5



- › Use with 450 Series Workstations.
- › Heavy gauge all welded steel construction.

450HS WORKTOPS



Product #	Description	Size In.	Weight Lbs.
J4550-HWT	50"	50-1/5 x 24-13/16	58.0
J4557-HWT	57"	56-7/8 x 24-13/16	60.0
J4566-HWT	66"	66-1/2 x 24-13/16	68.0



- › Use with 450 Series Workstations.
- › Hardwood construction.
- › Rounded edges for a smooth finish.

440SS 54" WORKSTATION - 14 DRAWER



Product #	Color	Length In.	Height In.	Depth In.	Weight Lbs.
J445442-14RD	Red	54	42	18	345
J445442-14BK	Black	54	42	18	345



Quantity	Type	Length In.	Height In.	Depth In.
2	Drawer	23-1/4	1-7/8	16-1/8
2	Drawer	23-1/4	1-7/8	16-1/8
4	Drawer	23-1/4	3-15/16	16-1/8
4	Drawer	23-1/4	3-15/16	16-1/8
1	Drawer	23-1/4	8-1/16	16-1/8
1	Drawer	23-1/4	1-1/16	16-1/8

- › Cubic inch capacity is 22,248.
- › Maximum weight capacity for each drawer is 100 lbs.
- › Aluminum extruded drawer pulls.
- › 100% Full extension drawers.
- › Recessed drawer pulls.
- › 100 lbs. Ball bearing slides.
- › Heavy-duty key.
- › 4-Way channel bottom panel.
- › 5" x 2" Polyurethane casters - 450 lbs./caster.
- › Vinyl top and drawer liners included.
- › Smooth, sleek and durable paint finish.
- › Heavy-duty easy grip handle.

440SS 41" WORKSTATION - 15 DRAWER



Product #	Color	Length In.	Height In.	Depth In.	Weight Lbs.
J444142-15RD	Red	41	42	18	275
J444142-15BK	Black	41	42	18	275



Quantity	Type	Length In.	Height In.	Depth In.
1	Drawer	37-3/4	3-15/16	16-1/8
4	Drawer	11-1/8	1-7/8	16-1/8
2	Drawer	11-1/8	3-15/16	16-1/8
1	Drawer	11-1/8	8-1/16	16-1/8
4	Drawer	23-1/4	1-7/8	16-1/8
2	Drawer	23-1/4	3-15/16	16-1/8
1	Drawer	23-1/4	8-1/16	16-1/8

- › Cubic inch capacity is 14,362.
- › Maximum weight capacity for each drawer is 100 lbs.
- › Aluminum extruded drawer pulls.
- › 100% Full extension drawers.
- › Recessed drawer pulls.
- › 100 lbs. Ball bearing slides.
- › Heavy-duty key.
- › 4-Way channel bottom panel.
- › 5" x 2" Polyurethane casters - 450 lbs./caster.
- › Vinyl top and drawer liners included.
- › Smooth, sleek and durable paint finish.
- › Heavy-duty easy grip handle.



440SS 41" WORKSTATION - 6 DRAWER



Product #	Color	Length In.	Height In.	Depth In.	Weight Lbs.
J444142-6RD	Red	41	42	18	250
J444142-6BK	Black	41	42	18	250



Quantity	Type	Length In.	Height In.	Depth In.
5	Drawer	37-3/4	3-15/16	16-1/8
1	Drawer	37-3/4	8-1/16	16-1/8

- › Cubic inch capacity is 15,588.
- › Maximum weight capacity for each drawer is 100 lbs.
- › Aluminum extruded drawer pulls.
- › 100% Full extension drawers.
- › Recessed drawer pulls.
- › 100 lbs. Ball bearing slides.
- › Heavy-duty key.
- › 4-Way channel bottom panel.
- › 5" x 2" Polyurethane casters - 450 lbs./caster.
- › Vinyl top and drawer liners included.
- › Smooth, sleek and durable paint finish.
- › Heavy-duty easy grip handle.

440SS 27" ROLLER CABINET - 12 DRAWER



Product #	Color	Length In.	Height In.	Depth In.	Weight Lbs.
J442742-12RD	Red	34	27	25	235
J442742-12BK	Black	34	27	25	235
J442742-12BL	Blue	34	27	25	235



Quantity	Type	Length In.	Height In.	Depth In.
1	Drawer	11-1/8	3-15/16	16-1/8
4	Drawer	5	1-7/8	16-1/8
4	Drawer	23-1/4	1-7/8	16-1/8
2	Drawer	23-1/4	3-15/16	16-1/8
1	Drawer	23-1/4	8-1/16	16-1/8

- › Cubic inch capacity is 9,420.
- › Maximum weight capacity for each drawer is 100 lbs.
- › Aluminum extruded drawer pulls.
- › 100% Full extension drawers.
- › Recessed drawer pulls.
- › 100 lbs. Ball bearing slides.
- › Heavy-duty key.
- › 4-Way channel bottom panel.
- › 5" x 2" Polyurethane casters - 450 lbs./caster.
- › Vinyl top and drawer liners included.
- › Smooth, sleek and durable paint finish.
- › Heavy-duty easy grip handle.



440SS 27" ROLLER CABINET - 11 DRAWER



Product #	Color	Length In.	Height In.	Depth In.	Weight Lbs.
J442742-11RD	■ Red	27	42	18	205
J442742-11BK	■ Black	27	42	18	205



Quantity	Type	Length In.	Height In.	Depth In.
4	Drawer	11-1/8	1-7/8	16-1/8
4	Drawer	23-1/4	1-7/8	16-1/8
2	Drawer	23-1/4	3-15/16	16-1/8
1	Drawer	23-1/4	8-1/16	16-1/8

- › Cubic inch capacity is 9,410.
- › Maximum weight capacity for each drawer is 100 lbs.
- › Aluminum extruded drawer pulls.
- › 100% Full extension drawers.
- › Recessed drawer pulls.
- › 100 lbs. Ball bearing slides.
- › Heavy-duty key.
- › 4-Way channel bottom panel.
- › 5" x 2" Polyurethane casters - 450 lbs./caster.
- › Vinyl top and drawer liners included.
- › Smooth, sleek and durable paint finish.
- › Heavy-duty easy grip handle.

440SS 27" ROLLER CABINET - 8 DRAWER



Product #	Color	Length In.	Height In.	Depth In.	Weight Lbs.
J442742-8RD	■ Red	27	42	18	190
J442742-8BK	■ Black	27	42	18	190



Quantity	Type	Length In.	Height In.	Depth In.
4	Drawer	11-1/8	1-7/8	16-1/8
2	Drawer	23-1/4	3-15/16	16-1/8
2	Drawer	23-1/4	8-1/16	16-1/8

- › Cubic inch capacity is 9,829.
- › Maximum weight capacity for each drawer is 100 lbs.
- › Aluminum extruded drawer pulls.
- › 100% Full extension drawers.
- › Recessed drawer pulls.
- › 100 lbs. Ball bearing slides.
- › Heavy-duty key.
- › 4-Way channel bottom panel.
- › 5" x 2" Polyurethane casters - 450 lbs./caster.
- › Vinyl top and drawer liners included.
- › Smooth, sleek and durable paint finish.
- › Heavy-duty easy grip handle.



440SS 27" ROLLER CABINET - 7 DRAWER



Product #	Color	Length In.	Height In.	Depth In.	Weight Lbs.
J442742-7RD	■ Red	27	42	18	180
J442742-7BK	■ Black	27	42	18	180



Quantity	Type	Length In.	Height In.	Depth In.
2	Drawer	23-1/4	1-7/8	16-1/8
4	Drawer	23-1/4	3-15/16	16-1/8
1	Drawer	23-1/4	8-1/16	16-1/8

- › Cubic inch capacity is 9,747.
- › Maximum weight capacity for each drawer is 100 lbs.
- › Aluminum extruded drawer pulls.
- › 100% Full extension drawers.
- › Recessed drawer pulls.
- › 100 lbs. Ball bearing slides.
- › Heavy-duty key.
- › 4-Way channel bottom panel.
- › 5" x 2" Polyurethane casters - 450 lbs./caster.
- › Vinyl top and drawer liners included.
- › Smooth, sleek and durable paint finish.
- › Heavy-duty easy grip handle.

440SS 27" ROLLER CABINET - 7 DRAWER



Product #	Color	Length In.	Height In.	Depth In.	Weight Lbs.
J442735-7RD	■ Red	27	35	18	175
J442735-7BK	■ Black	27	35	18	175



Quantity	Type	Length In.	Height In.	Depth In.
5	Drawer	23-1/4	1-7/8	16-1/8
1	Drawer	23-1/4	3-15/16	16-1/8
1	Drawer	23-1/4	8-1/16	16-1/8

- › Cubic inch capacity is 7,449.
- › Maximum weight capacity for each drawer is 100 lbs.
- › Aluminum extruded drawer pulls.
- › 100% Full extension drawers.
- › Recessed drawer pulls.
- › 100 lbs. Ball bearing slides.
- › Heavy-duty key.
- › 4-Way channel bottom panel.
- › 5" x 2" Polyurethane casters - 450 lbs./caster.
- › Vinyl top and drawer liners included.
- › Smooth, sleek and durable paint finish.
- › Heavy-duty easy grip handle.



440SS 27" ROLLER CABINET - 4 DRAWER



Product #	Color	Length In.	Height In.	Depth In.	Weight Lbs.
J442742-4RD	■ Red	27	42	18	175
J442742-4BK	■ Black	27	42	18	175



Quantity	Type	Length In.	Height In.	Depth In.
4	Drawer	23-1/4	3-15/16	16-1/8
1	Compartment	24	14	17

- › Cubic inch capacity is 11,159.
- › Maximum weight capacity for each drawer is 100 lbs.
- › Aluminum extruded drawer pulls.
- › 100% Full extension drawers.
- › Recessed drawer pulls.
- › 100 lbs. Ball bearing slides.
- › Heavy-duty key.
- › 4-Way channel bottom panel.
- › 5" x 2" Polyurethane casters - 450 lbs./caster.
- › Vinyl top and drawer liners included.
- › Smooth, sleek and durable paint finish.
- › Heavy-duty easy grip handle.

440SS 27" ROLLER CABINET - 3 DRAWER



Product #	Color	Length In.	Height In.	Depth In.	Weight Lbs.
J442735-3RD	■ Red	27	35	18	150
J442735-3BK	■ Black	27	35	18	150



Quantity	Type	Length In.	Height In.	Depth In.
1	Drawer	23-1/4	1-7/8	16-1/8
2	Drawer	23-1/4	3-15/16	16-1/8
1	Compartment	24	14	17

- › Cubic inch capacity is 9,000.
- › Maximum weight capacity for each drawer is 100 lbs.
- › Aluminum extruded drawer pulls.
- › 100% Full extension drawers.
- › Recessed drawer pulls.
- › 100 lbs. Ball bearing slides.
- › Heavy-duty key.
- › 4-Way channel bottom panel.
- › 5" x 2" Polyurethane casters - 450 lbs./caster.
- › Vinyl top and drawer liners included.
- › Smooth, sleek and durable paint finish.
- › Heavy-duty easy grip handle.



440SS TOOL TOWER - 6 DRAWER



Product #	Color	Length In.	Height In.	Depth In.	Weight Lbs.
J442752-6RD	Red	27	52	18	200
J442752-6BK	Black	27	52	18	200



Quantity	Type	Length In.	Height In.	Depth In.
1	Drawer	23-1/4	1-7/8	16-1/8
2	Drawer	23-1/4	3-15/16	16-1/8
2	Drawer	23-1/4	8-1/16	16-1/8
1	Drawer	23-1/4	12-1/8	16-1/8

- › Cubic inch capacity is 13,716.
- › Maximum weight capacity for each drawer is 100 lbs.
- › Aluminum extruded drawer pulls.
- › 100% Full extension drawers.
- › Recessed drawer pulls.
- › 100 lbs. Ball bearing slides.
- › Heavy-duty key.
- › 4-Way channel bottom panel.
- › 5" x 2" Polyurethane casters - 450 lbs./caster.
- › Vinyl top and drawer liners included.
- › Smooth, sleek and durable paint finish.
- › Heavy-duty easy grip handle.

BASIC UTILITY CART



Product #	Color	Length In.	Height In.	Depth In.	Weight Lbs.
J441000-RD	Red	37-1/2	38-1/2	20-1/2	80.0



- › Proto® Utility Carts have been developed to meet the increasing requirements that customers demand.
- › Basic two-shelf system.
- › Two 3" deep storage shelves.
- › Reinforced corners for structural support.
- › Heavy-duty, locking, 5" x 2" casters.
Two swivel, two rigid.
- › 800 lbs. total weight capacity.
- › Red with black trim.
- › Assembly required.

440SS 54" TOP CHEST - 12 DRAWER



Product #	Color	Length In.	Height In.	Depth In.	Weight Lbs.
J445419-12RD	■ Red	54	23	18	220
J445419-12BK	■ Black	54	23	18	220



Quantity	Type	Length In.	Height In.	Depth In.
5	Drawer	23-1/4	1-7/8	16-1/8
5	Drawer	23-1/4	1-7/8	16-1/8
1	Drawer	23-1/4	3-15/16	16-1/8
1	Drawer	23-1/4	3-15/16	16-1/8

- › Cubic inch capacity is 11,803.
- › Maximum weight capacity for each drawer is 100 lbs.
- › Aluminum extruded drawer pulls.
- › 100% Full extension drawers.
- › Recessed drawer pulls.
- › 100 lbs. Ball bearing slides.
- › Heavy-duty key.
- › Vinyl top and drawer liners included.
- › Smooth, sleek and durable paint finish.

440SS 41" TOP CHEST - 12 DRAWER



Product #	Color	Length In.	Height In.	Depth In.	Weight Lbs.
J444119-12RD	■ Red	41	19	18	230
J444119-12BK	■ Black	41	19	18	230



Quantity	Type	Length In.	Height In.	Depth In.
5	Drawer	11-1/8	1-7/8	16-1/8
1	Drawer	11-1/8	3-15/16	16-1/8
5	Drawer	23-1/4	1-7/8	16-1/8
1	Drawer	23-1/4	3-15/16	16-1/8

- › Cubic inch capacity is 8,749.
- › Maximum weight capacity for each drawer is 100 lbs.
- › Aluminum extruded drawer pulls.
- › 100% Full extension drawers.
- › Recessed drawer pulls.
- › 100 lbs. Ball bearing slides.
- › Heavy-duty key.
- › Vinyl top and drawer liners included.
- › Smooth, sleek and durable paint finish.



440SS 27" TOP CHEST WITH DROP FRONT - 12 DRAWER



Product #	Color	Length In.	Height In.	Depth In.	Weight Lbs.
J442719-12RD-D	■ Red	26-1/4	19	18	155
J442719-12BK-D	■ Black	26-1/4	19	18	155



Quantity	Type	Length In.	Height In.	Depth In.
6	Drawer	5	1-7/8	16-1/8
3	Drawer	11-1/8	1-7/8	16-1/8
2	Drawer	23-1/4	1-7/8	16-1/8
1	Drawer	3	3-15/16	16-1/8

- › Cubic inch capacity is 5,678.
- › Maximum weight capacity for each drawer is 100 lbs.
- › Aluminum extruded drawer pulls.
- › 100% Full extension drawers.
- › Recessed drawer pulls.
- › 100 lbs. Ball bearing slides.
- › Heavy-duty key.
- › Vinyl top and drawer liners included.
- › Smooth, sleek and durable paint finish.

440SS 27" TOP CHEST WITH DROP FRONT - 10 DRAWER

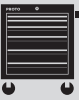


Product #	Color	Length In.	Height In.	Depth In.	Weight Lbs.
J442719-10RD-D	■ Red	26-1/4	19	18	145
J442719-10BK-D	■ Black	26-1/4	19	18	145



Quantity	Type	Length In.	Height In.	Depth In.
6	Drawer	5	1-7/8	16-1/8
1	Drawer	11-1/8	6	16-1/8
2	Drawer	23-1/4	1-7/8	16-1/8
1	Drawer	23-1/4	3-15/16	16-1/8

- › Cubic inch capacity is 5,593.
- › Maximum weight capacity for each drawer is 100 lbs.
- › Aluminum extruded drawer pulls.
- › 100% Full extension drawers.
- › Recessed drawer pulls.
- › 100 lbs. Ball bearing slides.
- › Heavy-duty key.
- › Vinyl top and drawer liners included.
- › Smooth, sleek and durable paint finish.



440SS 27" TOP CHEST WITH DROP FRONT - 4 DRAWER



Product #	Color	Length In.	Height In.	Depth In.	Weight Lbs.
J442715-4RD-D	■ Red	26-1/4	15	12	50
J442715-4BK-D	■ Black	26-1/4	15	12	50



Quantity	Type	Length In.	Height In.	Depth In.
3	Drawer	23-1/4	1-7/8	11-1/8
1	Drawer	23-1/4	3-15/16	11-1/8

- › Cubic inch capacity is 3,202.
- › Maximum weight capacity for each drawer is 100 lbs.
- › Aluminum extruded drawer pulls.
- › 100% Full extension drawers.
- › Recessed drawer pulls.
- › 100 lbs. Ball bearing slides.
- › Heavy-duty key.
- › Drawer liners included.
- › Smooth, sleek and durable paint finish.
- › Heavy-duty easy grip handle.

440SS 27" TOP CHEST WITH DROP FRONT - 6 DRAWER



Product #	Color	Length In.	Height In.	Depth In.	Weight Lbs.
J442715-6RD-D	■ Red	26-1/4	15	12	50
J442715-6BK-D	■ Black	26-1/4	15	12	50



Quantity	Type	Length In.	Height In.	Depth In.
2	Drawer	5	1-7/8	11-1/8
1	Drawer	11-1/8	1-7/8	11-1/8
2	Drawer	23-1/4	1-7/8	11-1/8
1	Drawer	23-1/4	3-15/16	11-1/8

- › Cubic inch capacity is 5,850.
- › Maximum weight capacity for each drawer is 100 lbs.
- › Aluminum extruded drawer pulls.
- › 100% Full extension drawers.
- › Recessed drawer pulls.
- › Friction slides.
- › Heavy-duty key.
- › Drawer liners included.
- › Smooth, sleek and durable paint finish.
- › Heavy-duty easy grip handle.



440SS 27" TOP CHEST - 8 DRAWER



Product #	Color	Length In.	Height In.	Depth In.	Weight Lbs.
J442719-8RD	Red	26-1/4	19	18	140
J442719-8BK	Black	26-1/4	19	18	140



Quantity	Type	Length In.	Height In.	Depth In.
4	Drawer	11-1/8	1-7/8	16-1/8
3	Drawer	23-1/4	1-7/8	16-1/8
1	Drawer	23-1/4	3-15/16	16-1/8

- › Cubic inch capacity is 5,990.
- › Maximum weight capacity for each drawer is 100 lbs.
- › Aluminum extruded drawer pulls.
- › 100% Full extension drawers.
- › Recessed drawer pulls.
- › 100 lbs. Ball bearing slides.
- › Heavy-duty key.
- › Vinyl top and drawer liners included.
- › Smooth, sleek and durable paint finish.

440SS 27" TOP CHEST - 6 DRAWER



Product #	Color	Length In.	Height In.	Depth In.	Weight Lbs.
J442719-6RD	Red	26-1/4	19	18	140
J442719-6BK	Black	26-1/4	19	18	140



Quantity	Type	Length In.	Height In.	Depth In.
5	Drawer	23-1/4	1-7/8	16-1/8
1	Drawer	23-1/4	3-15/16	16-1/8

- › Cubic inch capacity is 5,850.
- › Maximum weight capacity for each drawer is 100 lbs.
- › Aluminum extruded drawer pulls.
- › 100% Full extension drawers.
- › Recessed drawer pulls.
- › 100 lbs. Ball bearing slides.
- › Heavy-duty key.
- › Vinyl top and drawer liners included.
- › Smooth, sleek and durable paint finish.



440SS 27" TOP CHEST - 5 DRAWER



Product #	Color	Length In.	Height In.	Depth In.	Weight Lbs.
J442719-5RD	Red	26-1/4	23	18	130
J442719-5BK	Black	26-1/4	23	18	130



Quantity	Type	Length In.	Height In.	Depth In.
3	Drawer	23-1/4	1-7/8	16-1/8
2	Drawer	23-1/4	3-15/16	16-1/8

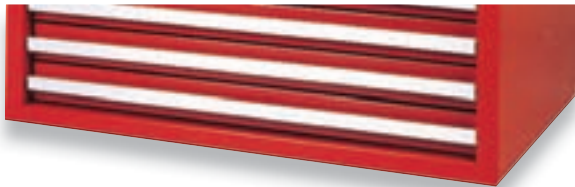
- › Cubic inch capacity is 5,990.
- › Maximum weight capacity for each drawer is 100 lbs.
- › Aluminum extruded drawer pulls.
- › 100% Full extension drawers.
- › Recessed drawer pulls.
- › 100 lbs. Ball bearing slides.
- › Heavy-duty key.
- › Vinyl top and drawer liners included.
- › Smooth, sleek and durable paint finish.

440SS INTERMEDIATE CHEST - 4 DRAWER



Product #	Color	Length In.	Height In.	Depth In.	Weight Lbs.
J442710-4RD-IC	Red	26-1/4	10	18	80
J442710-4BK-IC	Black	26-1/4	10	18	80

Quantity	Type	Length In.	Height In.	Depth In.
4	Drawer	23-1/4	1-7/8	16-1/8



- › Cubic inch capacity is 2,505.
- › Maximum weight capacity for each drawer is 100 lbs.
- › Aluminum extruded drawer pulls.
- › 100% Full extension drawers.
- › Recessed drawer pulls.
- › 100 lbs. Ball bearing slides.
- › Heavy-duty key.
- › Vinyl top and drawer liners included.
- › Smooth, sleek and durable paint finish.

440SS LOCKER CABINET - 4 DRAWER



Product #	Color	Length In.	Height In.	Depth In.	Weight Lbs.
J441558-4RD-LK	Red	15	58	18	125
J441558-4BK-LK	Black	15	58	18	125



Quantity	Type	Length In.	Height In.	Depth In.
4	Drawer	11-1/8	3-15/16	16-1/8

- › Cubic inch capacity is 13,090.
- › Maximum weight capacity for each drawer is 100 lbs.
- › 100% Full extension drawers.
- › 100 lbs. Ball bearing slides.
- › Heavy-duty key.
- › Smooth, sleek and durable paint finish.

440SS SIDE CABINET - 9 DRAWER



Product #	Color	Length In.	Height In.	Depth In.	Weight Lbs.
J441535-9RD-SC	Red	15	35	18	145
J441535-9BK-SC	Black	15	35	18	145



Quantity	Type	Length In.	Depth In.	Height In.
6	Drawer	11-1/8	16-1/8	1-7/8
2	Drawer	11-1/8	16-1/8	3-15/16
1	Drawer	11-1/8	16-1/8	8-1/16

- › Cubic inch capacity is 4,516.
- › Maximum weight capacity for each drawer is 100 lbs.
- › Aluminum extruded drawer pulls.
- › 100% Full extension drawers.
- › Recessed drawer pulls.
- › 100 lbs. Ball bearing slides.
- › Heavy-duty key.
- › Vinyl top and drawer liners included.
- › Smooth, sleek and durable paint finish.



440SS SIDE CABINET - 6 DRAWER



Product #	Color	Length In.	Height In.	Depth In.	Weight Lbs.
J441529-6RD-SC	■ Red	15	29	18	120
J441529-6BK-SC	■ Black	15	29	18	120



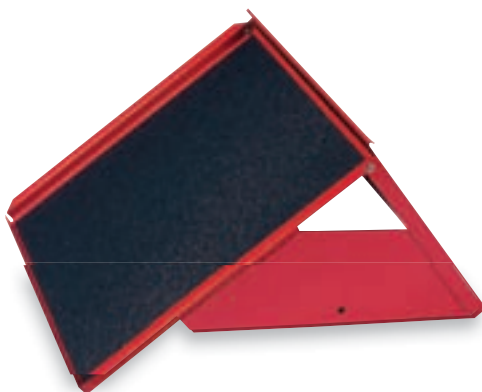
Quantity	Type	Length In.	Height In.	Depth In.
3	Drawer	11-1/8	1-7/8	16-1/8
2	Drawer	11-1/8	3-15/16	16-1/8
1	Drawer	11-1/8	8-1/16	16-1/8

- › Cubic inch capacity is 3,620.
- › Maximum weight capacity for each drawer is 100 lbs.
- › Aluminum extruded drawer pulls.
- › 100% Full extension drawers.
- › Recessed drawer pulls.
- › 100 lbs. Ball bearing slides.
- › Heavy-duty key.
- › Vinyl top and drawer liners included.
- › Smooth, sleek and durable paint finish.

440SS SIDE SHELVES



Product #	Color	Size In.	Weight Lbs.
J44SS-RD	■ Red	15-1/8 x 15	8.0
J44SS-BK	■ Black	15-1/8 x 15	8.0



- › Use with 440 Series Workstations.
- › Heavy gauge all welded steel construction.

440SS WORKTOP

Product #	Description	Size In.	Weight Lbs.
J4427-HWT	27"	26-5/8 x 17-3/8	17.0



- › Use with 27" 440 Series Roller Cabinets.
- › Hardwood construction.
- › Rounded edges for a smooth finish.



VINYL MATS

Product #	Length In.	Depth In.	Weight Lbs.
J32532P	26-1/2	17-3/4	1.98
J32344P	33-3/16	17-3/4	2.56



- › Vinyl mats protect cabinet and accessory tops.
- › Provides a skid-resistant, easy to clean workspace.

DRAWER LINER

Product #	Weight Lbs.
J9910	0.24



- › Polyethylene foam drawer liners.
- › Keep drawers protected.
- › Cut to fit any drawer.
- › 1 roll: 24" x 60" (1,440 square inches).

GENERAL PURPOSE TOOL BOX WITH 3 DRAWERS

Product #	Color	Capacity Cubic In.	Length In.	Height In.	Depth In.	Weight Lbs.
J9993-NA	Red	2075	20-3/16	11-3/4	8-3/4	25



Quantity	Type	Length In.	Depth In.	Height In.
1	Compartment	20	8-1/2	2-1/4
3	Drawer	18	7-1/4	1-1/2

GENERAL PURPOSE BOX WITH TRAY

Product #	Color	Capacity Cubic In.	Length In.	Height In.	Depth In.	Weight Lbs.
J9954-NA	Red	546	14	6-1/2	6	5.0
J9977-NA	Red	931	19-1/2	7	8	8.0
J9975-NA	Red	1,615	20	9-1/2	8-1/2	14.0
J9969-NA	Red	2,133	26	9-1/2	8-1/2	19.0



- › Removable steel tote tray.
- › Heavy-duty side handles.
- › Double latch for strength.
- › Padlockable center hasp for security.

HIP ROOF BOX WITH TRAY



Product #	Color	Capacity Cubic In.	Length In.	Height In.	Depth In.	Weight Lbs.
J9971-NA	Red	931	19	7	7	8.0



- › Removable steel tote tray.
- › Double latch for strength.
- › Hip roof lid design.

CARPENTER'S BOX



Product #	Color	Capacity Cubic In.	Length In.	Depth In.	Height In.	Weight Lbs.
J9979-NA	Brown	2,584	32	8-1/2	9-1/2	24.0



- › Removable steel tote tray.
- › Extra wide for large tools.
- › Double latch for strength.
- › Padlockable center hasp for security.
- › Heavy-duty side handles.

CANTILEVER BOX

Product #	Color	Capacity Cubic In.	Length In.	Height In.	Depth In.	Weight Lbs.
J9951	Black	2,520	18	14	10	20.0



- › 4 trays - 2 with covers.
- › Trays swing out for easy tool access.



STRUCTURAL FOAM BOX



Product #	Color	Capacity Cubic In.	Length In.	Height In.	Depth In.	Weight Lbs.
J9901	Brown	1,502	20	10-1/2	8-3/4	8.0
J9902	Black	2,037	26	10-1/2	8-3/4	10.5



- › Will not dent or chip.
- › Rust-resistant.
- › Structural foam construction.
- › Removable tote tray.

HEAVY-DUTY SET BOXES



Product #	Color	Length In.	Height In.	Depth In.	Weight Lbs.
J5894	Red	31-13/16	3-9/16	10-7/16	13.0
J5896	Red	35-3/8	5-1/2	15-3/16	33.0
J5694	Red	20-1/4	6-1/2	3-3/8	11.0
J5695	Red	20-1/8	7-15/16	3-3/8	13.0
J5696	Red	25-3/16	9-1/16	4-1/16	18.0
J5697	Red	26-3/4	14-1/2	4	24.0



- › Padlockable center hasp for security.
- › Side handles.

SET BOXES



Product #	Color	Length In.	Height In.	Depth In.	Weight Lbs.
J4795	Red	7	1-1/4	3-7/16	0.75
J4797	Red	10-15/16	1-1/4	3-11/16	1.17
J5298	Red	17-5/16	1-7/8	5-5/16	2.60
J5299	Red	10-3/8	1-5/8	4-7/16	1.36
J5496-NA	Red	19	3-7/8	6-1/4	4.00
J5497	Red	23	2-3/16	8	5.20



- › These set boxes are used to store Socket Sets in your Tool Box or Utility Cart.
- › They also make it convenient and easy to transport a full set of sockets to the job..

PROFESSIONAL EXTRA HEAVY-DUTY LEATHER REINFORCED TOOL BAGS



Product #	Length In.	Depth In.	Weight Lbs.
J95322	24	8	4.25
J95327	27	17	4.94



- › Rugged No. 8 white canvas reinforced with top grain leather bottom.
- › One-piece construction riveted to 12 gauge steel hinged frame.
- › Riveted reinforced leather handles and retaining straps.
- › Water-resistant fiber board bottom.
- › 9" x 11" reinforced inside pocket.
- › 6 metal studs to protect outside bottom wear.

PROFESSIONAL EXTRA HEAVY-DUTY REINFORCED TOOL BAGS WITH VINYL BOTTOM



Product #	Length In.	Depth In.	Weight Lbs.
J95311	18	9	2.73
J95316	20	10-1/4	3.24



- › Rugged No. 8 white canvas reinforced with tough vinyl bottom.
- › One-piece construction riveted to 12 gauge steel hinged frame.
- › Riveted reinforced leather handles and retaining straps.
- › Water-resistant fiber board bottom.
- › 6 metal studs to protect outside bottom wear.

ALL-PURPOSE CANVAS ZIPPER BAGS



Product #	Size in.	Weight Lbs.
J95305	12 x 7	0.21
J95306	8-1/2 x 7	0.28



- › One piece construction of No. 8 canvas.
- › Heavy-duty zipper.
- › Ideal for storing pliers, wrenches, screwdrivers and other small tools and instruments.
- › 2 convenient sizes.

STRAIGHT WALL UTILITY BUCKET



Product #	Diameter In.	Height In.	Weight Lbs.
J95336	12	14	1.64



- › Rugged No. 4 white canvas.
- › Polypropylene rope handles reinforced at top ring.
- › 8" x 7" inside pocket.
- › Heavy-duty die cast swivel snap hook.



CANVAS TOOL POUCH

Product #	Number of Pockets	Length In.	Thickness In.	Weight Lbs.	
J25TR01C	7	12	3/16	0.15	🇺🇸
J25TR02C	12	7-1/2	3/32	0.15	🇺🇸
J25TR03C	7	10-29/32	3/16	0.13	🇺🇸
J25TR04C	5	14-11/16	3/32	0.18	🇺🇸
J25TR05C	10	14-3/16	3/16	0.29	🇺🇸
J25TR06C	5	12	3/32	0.10	🇺🇸
J25TR07C	7	11	3/32	0.12	🇺🇸
J25TR08C	14	15	3/16	0.36	🇺🇸
J25TR09C	9	9-3/32	3/32	0.12	🇺🇸
J25TR10C	13	12	3/32	0.09	🇺🇸
J25TR11C	1	7	3/32	0.04	🇺🇸
J25TR12C	8	7-1/2	3/32	0.05	🇺🇸
J25TR13C	11	10-5/16	3/16	0.16	🇺🇸
J25TR15C	5	8-13/16	3/32	0.08	🇺🇸
J25TR16C	8	12-1/2	3/32	0.14	🇺🇸
J25TR17C	3	10	3/32	0.07	🇺🇸
J25TR18C	4	7-1/2	3/16	0.10	🇺🇸
J25TR19C	6	12-5/16	3/16	0.18	🇺🇸
J25TR20C	10	11-11/16	13/32	0.45	🇺🇸
J25TR21C	26	16-1/2	3/16	0.47	🇺🇸
J25TR22C	3	10	3/16	0.20	🇺🇸
J25TR23C	7	9	3/16	0.12	🇺🇸
J25TR24C	7	9-1/2	5/16	0.12	🇺🇸
J25TR25C	6	8-11/16	3/16	0.09	🇺🇸
J25TR26C	9	9-1/2	3/32	0.06	🇺🇸
J25TR27C	8	9-1/2	1/2	0.31	🇺🇸
J25TR28C	10	13-5/16	3/16	0.22	🇺🇸
J25TR29C	7	11-11/16	3/32	0.15	🇺🇸
J25TR30C	5	12	3/32	0.08	🇺🇸
J25TR31C	7	8	3/32	0.08	🇺🇸
J25TR32C	7	12-29/32	3/16	0.23	🇺🇸
J25TR33C	7	11-11/16	3/32	0.17	🇺🇸
J25TR34C	15	15	5/16	0.58	🇺🇸
J25TR35C	9	12-29/32	1/32	0.17	🇺🇸
J25TR36C	17	11	1/2	0.47	🇺🇸
J25TR37C	7	11-1/2	3/16	0.17	🇺🇸
J25TR38C	9	13-3/4	3/16	0.17	🇺🇸
J25TR39C	10	15-5/16	5/16	0.29	🇺🇸
J25TR40C	14	13	5/16	0.30	🇺🇸
J25TR41C	15	12	13/32	0.57	🇺🇸
J25TR42C	18	13	13/32	0.51	🇺🇸
J25TR43C	7	12-29/32	3/32	0.18	🇺🇸
J25TR44C	11	13	5/16	0.41	🇺🇸
J25TR45C	8	9-1/2	2	0.40	🇺🇸
J25TR49C	5	7	1-1/2	0.20	🇺🇸
J25TR50C	1	6-1/3	3/16	0.20	🇺🇸
J25TR52C	5	10	3/16	0.20	🇺🇸
J25TR53C	3	10-1/4	3/16	0.20	🇺🇸
J25TR54C	3	15-1/2	3/16	0.30	🇺🇸



- ▶ Red canvas.
- ▶ Stitched and reinforced edges for strength.
- ▶ Reinforced pockets.
- ▶ Tie strap closure.



11-POCKET PROFESSIONAL CONSTRUCTION POUCH



Product #
J95120

Weight Lbs.
1.80



- › 2 extra capacity deep flared main pockets.
- › 2 outer pockets.
- › 6 small utility pockets.
- › 2 extra thick hammer or hatchet loops.
- › Heavy-duty, top grain moccasin leather.
- › 1 25"/30" tape ruler holder.
- › 2-1/2" wide polypropylene web belt adjusts to fit waists up to 50".

2-POCKET WAIST APRON



Product #
J95350

Weight Lbs.
0.28



- › Heavy-duty 10 oz. white canvas.
- › Triple stitched bindings and waist ties.

14-POCKET LEATHER EXTRA CAPACITY ELECTRICIAN'S TOOL POUCH

Product #
J95030

Weight Lbs.
1.43



- › 10" x 10"
- › 4 Large gusseted utility pockets and 2 preformed plier pockets.
- › 4 Screwdriver slots, 12" tape rule holder, secured T-type tape holder with swivel rivet.
- › 2-3/4" Belt slots.
- › Additional features: Sectioned pocket for torpedo level, multi-purpose tool snap, scratch awl pocket and pencil holders.
- › Heavy-duty, top grain leather.

LEATHER HAMMER HOLSTER



Product #
J95151

Weight Lbs.
0.22



- › Heavy-duty top grain saddle leather.
- › Double rivet reinforced.
- › Rust-resistant steel cradle.
- › 2-1/2" belt slots.

LEATHER UTILITY KNIFE HOLDER



Product #
J95165

Weight Lbs.
0.17



- › Open end "V" shape design.
- › Heavy-duty top grain saddle leather.

2-POCKET LEATHER CABLE SPLICER HOLDER

Product #
J95170

Weight Lbs.
0.17



- › Heavy-duty top grain saddle leather.
- › 2 flared pockets for cable splicer, knife and scissors.
- › 2-1/2" belt slots.

LEATHER FOLDING KNIFE BLADE SHEATH



Product #
J95218

Weight Lbs.
0.12



- › Preformed top grain leather holds knife securely.
- › Heavy-duty stitching and safety snap.

SAFETY TIPS

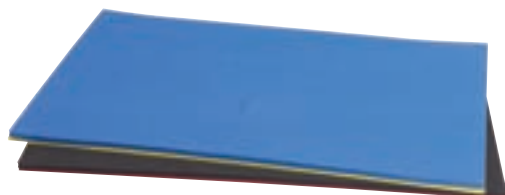


Always store a fixed-blade utility knife in a holster.



DO-IT-YOURSELF KITS

Product #	Color	Kit Contains	Foam Size In.
DIYBK	Black/Red	Two layers of foam, instructions and low tac tracing paper	26-1/4 x 39 1/2 top layer 1/4 base layer
DIYBL	Blue/Yellow	Two layers of foam, instructions and low tac tracing paper	26-1/4 x 39 1/2 top layer 1/4 base layer



- › Proto® Industrial Tools Do-It-Yourself Kits allow you to make your FOD Kit in-house.
- › Resistant to most any chemicals, such as diesel fuel, jet fuel, cutting coolants and Skydrol®.
- › Moisture resistant.
- › Tear resistant.
- › Non-abrasive.
- › Do-It-Yourself Kits can be cut easily with a Stanley® Hobby (10-401) or Utility Knife (10-778).



LEATHER FLASHLIGHT HOLDER

- › Top grain saddle leather.
- › Will accept standard "D" size flashlights.

Product #	Weight Lbs.
J95260	0.11



LEATHER TOOL HOLDER

- › Heavy-duty, top grain saddle leather.
- › Preformed 4" deep pocket for secure snug fit.
- › Convenient for slip joint, diagonal and up to 7" side cutting pliers, or our Infrared Temperature Readers.
- › 2-1/2" belt slots.
- › 2-3/4" x 8"

Product #	Weight Lbs.
J95160	0.18



LEATHER TAPE HOLDER

- › This Leather Tape Rule Holder fits 25' & 30' Tapes
- › Heavy-duty top grain saddle leather
- › Preformed pockets with easy "Push up" design
- › Safety snap positioned to allow tape rules with belt clips
- › Contoured to permit use of tape blade lock
- › 2-3/4" Belt slots

Product #	Weight Lbs.
J95140	0.20



ADJUSTABLE WEB BELTS

- › Polypropylene.
- › Fits waists up to 50 inches.

Product #	Size In.	Weight Lbs.
J95230	up to 50	0.40



LEATHERWORK BELT

- › Heavy-duty top grain saddle leather.
- › Extra strong double tongue roller buckle.
- › Attractive embossed basket weave design.

Product #	Size In.	Weight Lbs.
J95237	40 - 48	0.52
J95238	46 - 52	0.65



FACOM® SAFETY GLOVES



Product #	Size In.	Length In.	Weight Lbs.
FT-BC.109VSE	9	11-13/16	0.36
FT-BC.110VSE	10	12-19/32	0.43



- › Silicon leather to help provide mechanical protection.
- › Worn over latex insulating gloves.

SOCKET BAR SETS - 1/4" THRU 3/4"



Product #	Drive Size In.	No. of Clips	Length In.	Weight Lbs.
J2570	1/4	10	9	0.15
J2571	1/4	16	17	0.23
J2572	3/8	10	9	0.19
J2573	3/8	16	17	0.24
J2575	1/2	16	17	0.28
J2576	3/4	5	9	0.19
J2577	3/4	8	17	0.30

- › Heavy gauge all welded steel construction.



SOCKET BARS



Product #	Length In.	Weight Lbs.
J2584	6-1/4	0.06
J2585	9	0.08
J2588	11	0.10
J2586	13	0.11
J2587	17	0.15

- › All clips fit all bars.



SOCKET CLIPS



Product #	Drive Size In.	Weight Lbs.
J2590	1/4	0.01
J2591	3/8	0.01
J2592	1/2	0.01
J2594	3/4	0.01

- › All clips fit all bars.

